



# ALL SAINTS WELLINGTON

WITH ST CATHERINE'S EYTON




# IMPACT OF GIVING

# 2025



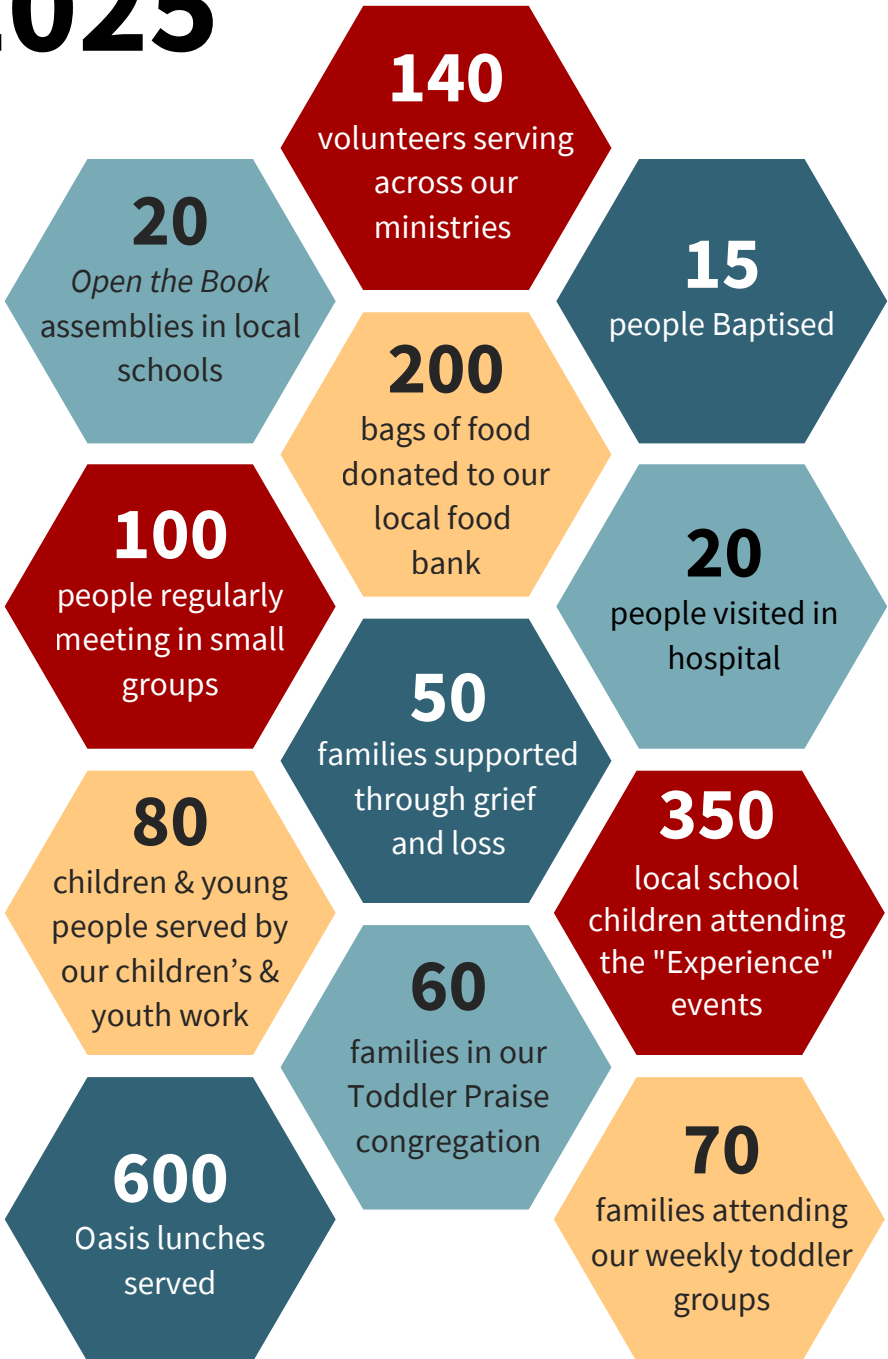
As I look back over the last year, I feel incredibly thankful for the growth and momentum we have seen at All Saints, Wellington. It's been a real encouragement to watch the community grow as we've experienced God's fire energising and refining us, and as God has brought new people to join our church family.

As I hope will be evident as you read through this leaflet, your generosity is making an incredible difference. As we continue our journey together, I invite you to consider your contribution to our shared mission. Whether you've been a long-standing member or have never given before, your support, big or small, ensures our church remains a beacon of love, compassion, and faith for all.



called to be closer to Christ  
*sent to be closer to others*

# 2025



## TODDLERS AND UNDER 5S

Our Toddler groups have continued to thrive under Clair's care, often seeing up to 70 people attending per session on Wednesdays and Thursdays. The Orbit toddler group has remained very popular and is a great link into our community. Toddler Praise, our fortnightly Church service for under 5's and their grown-ups, is a great place to deepen the relationships we already have through Toddlers. Toddler Praise was one of our fastest growing congregations in 2025. A typical session includes engaging in faith-based activities, singing praise songs, and dancing with bubbles!



## TOY LIBRARY

Our new Toy Library was launched in October and has been a great success. The library offers the free loan of toys for under-5s, as well as providing tea and coffee for the grown-ups and friendly faces to chat to. It is proving a wonderful way of serving the community and bringing people into the church.

## CHILDREN AND YOUTH

At All Saints we want our children and young people to be able to meet with Jesus through what we deliver, to learn more about their faith and to really see the blessings he wants to pour into their lives. Throughout 2025 our groups have served 80 children and young people, with Climbers, Explorers, and Pathfinders running on Sunday mornings.

Our Sunday evening Tyndale group, for 13-18 year olds has been growing. In the summer a number of them joined with thousands of other young people from across the country at the Limitless Festival, engaging in worship, prayer, and growing their relationship with God.



The mid-week Pathfinders group is a fun evening for 9 – 13 year olds. As well as space to chill and make new friends, there are some guided crafts, games, and a thought for the day. The Pathfinders come from many different local schools in the area.

Explore, ended the year with a bang, seeing attendance rise dramatically. Each monthly, Sunday afternoon session has a bible story, crafts on the theme, a short service in church, and a meal together. Explore is valued by many as an inclusive, family-friendly, and accessible expression of church, particularly for families with young children, neurodivergent needs, and those less comfortable with traditional Sunday services.

## **SUNDAYS**

Sunday service attendance continued to grow throughout 2025, with an average of 150 people gathering each week for prayer, worship, and encouragement. Our monthly all-age services have been a real joy, with our children and youth groups staying in church for the whole time. It's been amazing to see the whole church family engage in worship together!



Sunday evening services took place on 3 Sundays each month during 2025, providing opportunities to go deeper in study of the Bible, worship and prayer, and rest in God.

## **BAPTISMS**

In 2025 there were 15 people baptised. We celebrated their commitment to Christ and welcomed them into the church family!

In December we also had our Confirmation service, where 11 people publicly affirmed their faith, and their commitment to follow Jesus.

## **SMALL GROUPS**

Small groups provide an opportunity for people to meet together in smaller groups, to engage in bible studies and fellowship. In 2025 there were around 100 people regularly meeting in this way.

## DEMENTIA FRIENDLY

Throughout 2025 we continued our commitment to being a Dementia Friendly Church. A particular highlight was the 'Musical Memories' concert with Matthew Richards (who was featured on Channel 4's The Piano), raising money for the Alzheimer's Society. We marked World Alzheimer's month, and have been looking into suitable resources to add into our Home Communion packs.

We were very grateful to welcome another member to the Dementia Friendly co-ordination team.



## OASIS

Running from September to May, 'Oasis' is our monthly luncheon club for the over 60's with worship and a speaker. In 2025 we served approximately 600 lunches and heard from a variety of speakers sharing a wide range of topics.

## ECO CHURCH

We are very glad to have been awarded the silver eco-church award. Being an eco-church is part of an on-going commitment to care for creation as part of our faith. Part of our environmental commitment is to partner with others in the community.



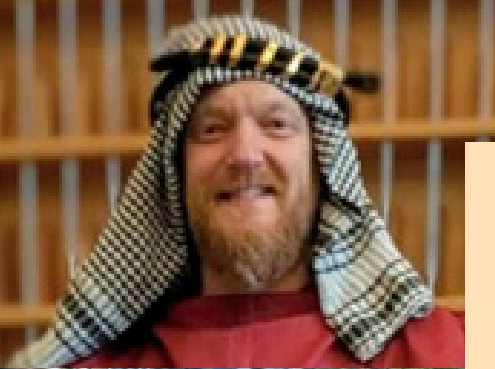
## ORGAN PROJECT

The organ project team have continued their fundraising efforts through grant applications, concerts, events, and pledges. A grant pledge of £50,000 from the Vinehill Trust has helped the project fund increase significantly. The programme of concerts and events throughout 2025 was particularly engaging, and appreciated by all who attended.



## COMMUNITY MUSICAL

Rehearsals for the next Community Musical, *The Prince of Egypt* began in the autumn, bringing together people from the community and the churches across Telford, to form the cast and choir to tell the story of Moses, through the music of Stephen Schwartz. Previous projects have included *Godspell*, *Children of Eden*, and *Joseph and the Amazing Technicolor Dreamcoat*, all with a positive impact on those involved and those attending. Performances will take place on 6th June 2026 and admission will be free of charge.



**CHRISTMAS SERVICES**  
**OPEN THE BOOK**  
**MIDWEEK COMMUNION**  
**HOME COMMUNION**  
**EXPERIENCE EASTER**  
**AND HARVEST**  
**ABOVE MY HEAD**  
**PUPPET COMPANY**  
**BUMPS & BABIES**  
**FOOD BANK**  
**SCHOOLS WORK**  
**MIDSUMMER FAYRE**  
**REVIVE WOMEN'S DAY**  
**REMEMBRANCE**  
**SUNDAY LUNCHEONS**  
**ALPHA**

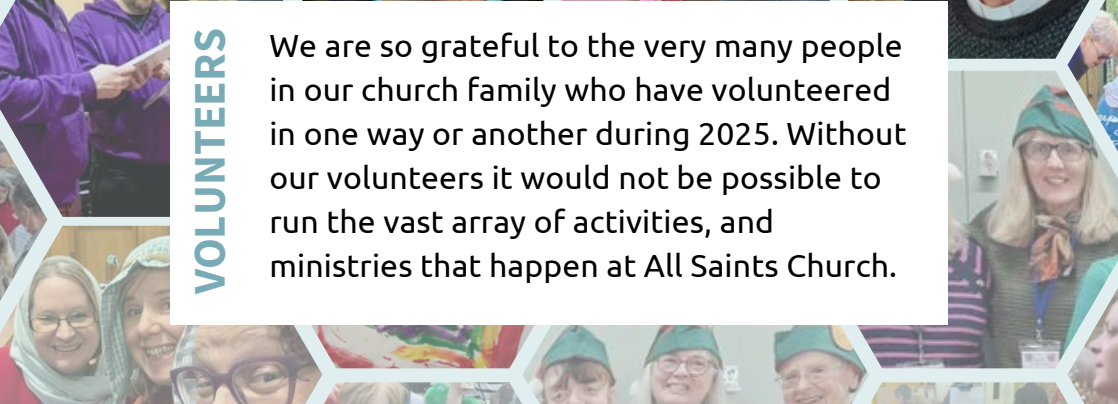
## STAFF TEAM

At All Saints we believe that every member of our church family is important and able to contribute to the life of our church. In order to support that we have our incredible Staff Team, Licensed ministers team and Ministry Team who are responsible for overseeing different areas of our church life.



## VOLUNTEERS

We are so grateful to the very many people in our church family who have volunteered in one way or another during 2025. Without our volunteers it would not be possible to run the vast array of activities, and ministries that happen at All Saints Church.



Over the next year, we hope to work in partnership to set up a Community Hub in Wellington, install solar panels on the Parish Centre roof, and build on our successful work with children and young families.

This will enable us to serve our community, fulfil our mandate to care for creation, and to see more people becoming faithful followers of Jesus.

**Everything we do is made possible by the generous giving of our church community. Thank you!**

**We'd love to invite you to join in and be a part of everything God is doing through All Saints, Wellington.**

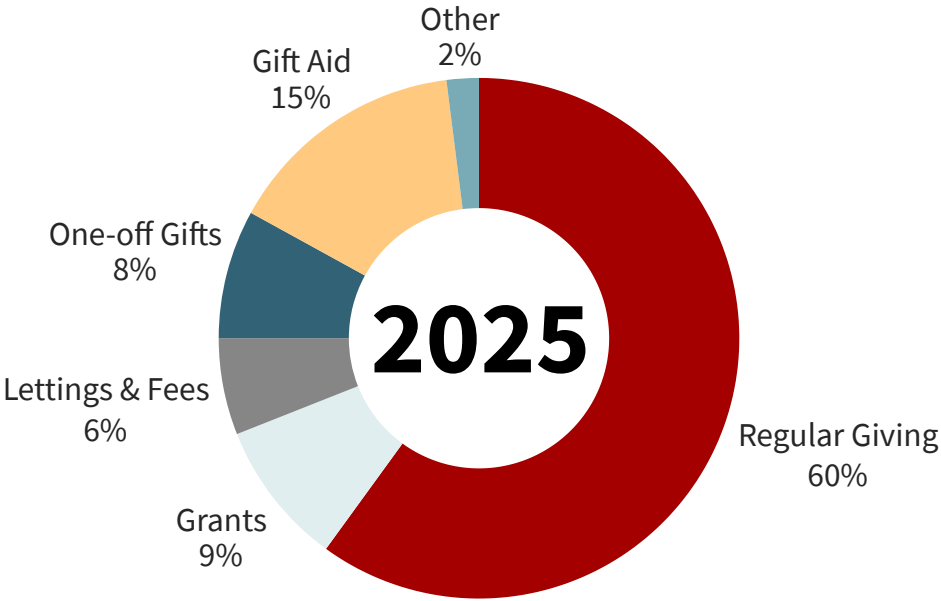


# HOW DOES YOUR GIVING MAKE A DIFFERENCE?

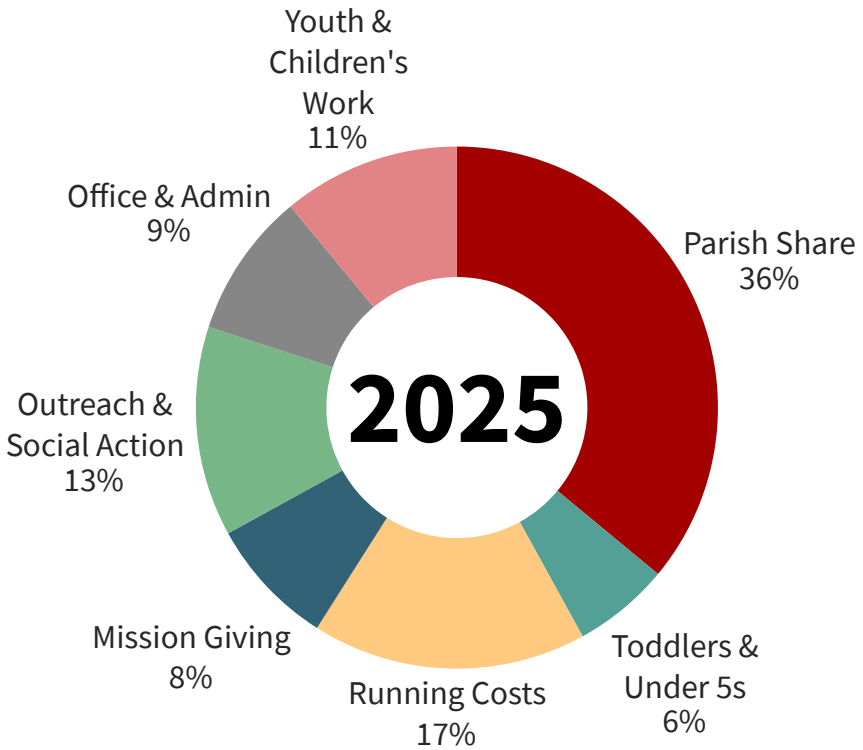
Everything you give helps enable our vision



**CALLED TO BE CLOSER TO CHRIST  
SENT TO BE CLOSER TO OTHERS**



# INCOME



# EXPENDITURE

**JOIN THE ADVENTURE**



## **BANK TRANSFER**

Make a one-off donation or set up a standing order to give regularly.

**Account Name:** PCC All Saints

**Account Number:** 00147720

**Sort Code:** 30-99-27

## **GIVE ONLINE**



Scan this QR code to give online.



## **GIVING DIRECT**

Make a regular donation via the Lichfield Diocese Giving Direct scheme by visiting [lichfield.anglican.org/financegivingdirect](https://lichfield.anglican.org/financegivingdirect) and emailing your completed form to [treasurer@allsaints-wellington.org.uk](mailto:treasurer@allsaints-wellington.org.uk).

## **CASH OR CHEQUE**

You can place cheques or cash in the envelopes provided. Please make cheques payable to 'PCC All Saints' and fill in the Gift Aid form if you are eligible.

## **GIFT AID**

If you're a UK taxpayer we would love you to fill out a Gift Aid Declaration. By filling out the form, we can claim an extra 25% of your gift from the government (at no extra cost to you!) which means your gift goes even further! Complete the form on your giving envelope or online at [allsaints-wellington.org.uk/support-us](https://allsaints-wellington.org.uk/support-us)



**ALL SAINTS CHURCH, WELLINGTON**  
**ALL SAINTS PARISH CENTRE, LYCHGATE WALK, TF1 3HA**  
**[ALLSAINTS-WELLINGTON.ORG.UK](http://ALLSAINTS-WELLINGTON.ORG.UK) | 01952 248554**